

UWELL

Manufactured by SHENZHEN UWELL TECHNOLOGY CO., LTD.

©2022 By SHENZHEN UWELL TECHNOLOGY CO., LTD., All Rights Reserved.
Designed by UWELL Made in China

www.myuwell.com



Uwelltech



Uwelltech



Uwelltech



Uwelltech



Uwell

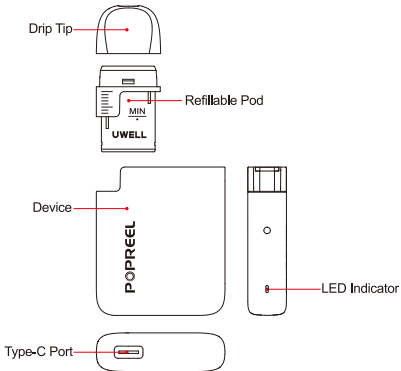


POPREEL

POPREEL PK1 Pod System User Manual

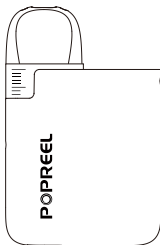


Illustration



Quick Guide

1. Remove the insulating film from the bottom of the cartridge, open the drip tip and fill the e-liquid.
2. Please let it sit for 10 minutes after the first e-liquid filling.



Top Fill



PRO-FOCS



Smart Chipset



Mix & Match

Specifications

- Materials: PCTG、PC、ABS
- Dimensions: 70.4 mm*45 mm*13.5 mm
- Net Weight: 35.9 g
- E-Liquid Capacity: 2 ml
- Max Output Power: 13 W
- Refillable Pod Specification: FeCrAl UN2 Meshed-H 1.2 Ω POPREEL P1 Refillable Pod
- Battery Capacity: 520 mAh

The Package Includes

- 1 × POPREEL PK1 Pod System
- 1 × UN2 Meshed-H 1.2 Ω POPREEL P1 Refillable Pod (Pre-installed)
- 1 × Silicone Lanyard
- 1 × User Manual
- 1 × Drip Tip

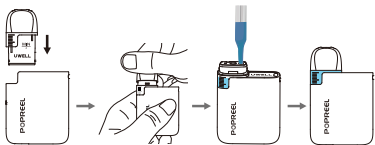
Features

1. Draw-activated vaping, easy to operate.
2. Magnetic refillable pod, easy and convenient.
3. Convenient top-filling.
4. An unparalleled vape experience is brought by proprietary PRO-FOCS flavor testing technology from UWELL.
5. Stable, safe, and reliable performance is ensured by built-in safety mechanism.
6. Rounded-corner design, double-color plastic coating, and fine grain for the good-looking.
7. Multiple pod cartridge and device color options are available. Show your true color.
8. Large e-liquid check window makes the e-liquid level clearly visible.

Instructions

1. Filling the pod

- Insert the pod into the device.
- Remove the drip tip to reveal the filling port.
- Fill with e-liquid.
- Cap on with drip tip.



Attention:

- Please aim at the red filling port when filling the e-liquid, and do not fill into the middle air inlet.
- Do not leave the filled pod open. Secure the filler plug to prevent leakage.
- To avoid dry-burning, please let it sit for 10 minutes after the first e-liquid filling.
- Please re-fill immediately when the e-liquid level reaches the "MIN" mark.

2. Vape

LED indicator remains on as you vape. If vaping lasts for more than 8 seconds, the green light will flash 5 times to signal overtime usage and stop output.

3. Replace the pod

Pull out the used pod from the device. Insert a new pod.

Attention:

To avoid dry-burning, please let it sit for 10 minutes after the first e-liquid filling.

4. Power indication

During vaping, flashing in green to indicate a more than 60% battery level, flashing in blue to indicate a 30%~60% battery level, and flashing in red to indicate a less than 30% battery level. If flickering in red 10 times, it means insufficient power and the device will stop outputting.

5. Short-circuit protection

When a short-circuit occurs, it will flicker 3 times in red and stop output.

6. Low-voltage protection

If the battery level is below safety level, it flickers 10 times in red to signal an output stop.

7. Overtime protection

If vaping lasts for more than 8 seconds, it will flicker 5 times to signal output has stopped.

8. Open circuit indication

If the cartridge is not connected or poorly connected, the device will stop output and signal this by flickering in blue 3 times.

9. Charging

While charging, the indicator flashes red for less than 30% of charge, blue for charges between 30% to 60%, and green for 60% and more of charge. The indicator will stay on when the device is fully charged.

Attention

1. Please charge with certified high-quality adaptor from a reputable company and a Type-C cable with the charging current of 5V/2A.
2. The device and adaptor may warm up when charging, keep away from flammable and explosive goods.
3. Please use a dry and soft cloth to clean the device. Keep away from water or any liquids.
4. Please remove the pod cartridge and store it separately when you are on a plane to avoid leakage due to pressure changes.
5. Please do not put the device in your pocket with other hard objects to avoid damages.
6. Please turn off the device when it is not in use.
7. Please charge the device at least once a month.
8. Don't disassemble the device.
9. Avoid high temperature, low temperature and humidity during use or storage to avoid damage to the equipment.
10. The product parameters or pictures in this manual are for illustration purpose only, please refer to the actual product.

Safety Instruction

Please read the following safety instructions carefully before using the product.

1. This product is only available to people who have reached the legal age of smoking. It is strictly forbidden for young children, pregnant women and women during breastfeeding or for patients with heart disease, high blood pressure, diabetes, depression and asthma.

2. Please put the product out of reach of children and pets to avoid injury.
3. When using this product, please keep away from inflammable and explosive materials to avoid injury.
4. The company does not assume any responsibility for any equipment damage or personal injury caused by user misuse.

Warranty Details

Please keep the anti-counterfeit code and proof of purchase after purchasing the product. The warranty period is 180 days from the date of purchase. Our company provides warranty service (Device and atomizer only, exclude coil head and pod cartridge).

Please note that any of the following conditions are not covered by the warranty:

1. Exceeding the warranty period.
2. Damage caused by the use, maintenance, and storage that is not in accordance with the requirements as instructed.
3. Damage caused by unauthorized repair.
4. Damage caused by the usage of non-UWELL components.
5. Damage caused by force majeure.

Verification

1. Visit the UWELL official website www.myuwell.com through a smartphone or PC.
2. Please enter the 16 digits authentic code, and the result will be displayed in a few seconds.
3. Please feel free to contact UWELL via e-mail, phone or website for more help.

Customer Service

We pride ourselves in manufacturing quality products and providing excellent customer service. For any issues, please contact us at service@myuwell.com.

- * UWELL reserves the right of final interpretation of the user manual.
- * It is hereby stated that the markable area on the product is not enough to mark the CE and WEEE as the standard dimensions.